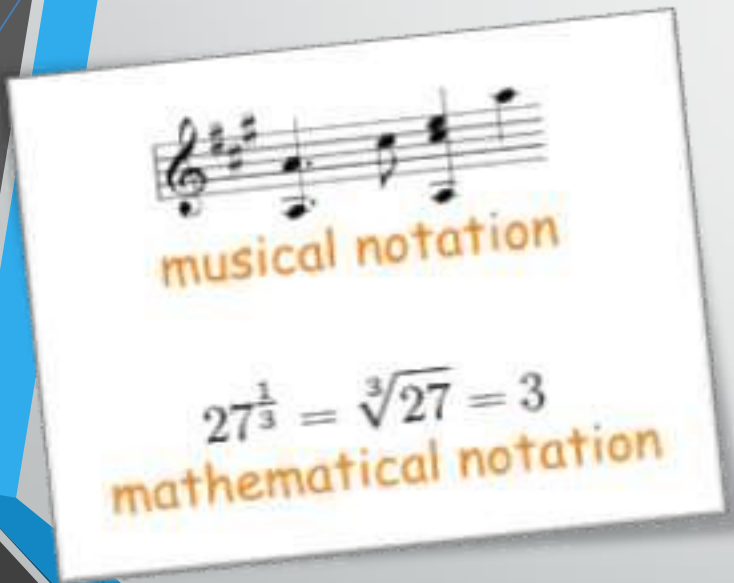




NOTASI MUSIK

adalah sistem penulisan karya musik. Dalam **notasi** musik, nada dilambangkan oleh not

NOTASI ADALAH



1

- **Pengertian 1**

seperangkat atau sistem lambang (tanda) yang menggambarkan bilangan (tentang aljabar), nada (tentang musik), dan ujaran (tentang fonetik)

2

- **Pengertian 2**

proses pelambangan bilangan, nada, atau ujaran dengan tanda (huruf)

3

- **Pengertian 3**

catatan pendek yang perlu diketahui atau untuk mengingatkan sesuatu

4

- **Pengertian 4**

suatu metode pencatatan, sepanjang persiapan dan proses latihan, dalam rangka menyimpan alur perjalanan dari elemen penandaan yang berbeda-beda



NOTASI MUSIK

Adalah tulisan musik; lambang tulisan musik

PENYEBUTAN (ISTILAH) LAIN

Beberapa istilah sering digunakan dalam penyebutan notasi musik

PARTITUR

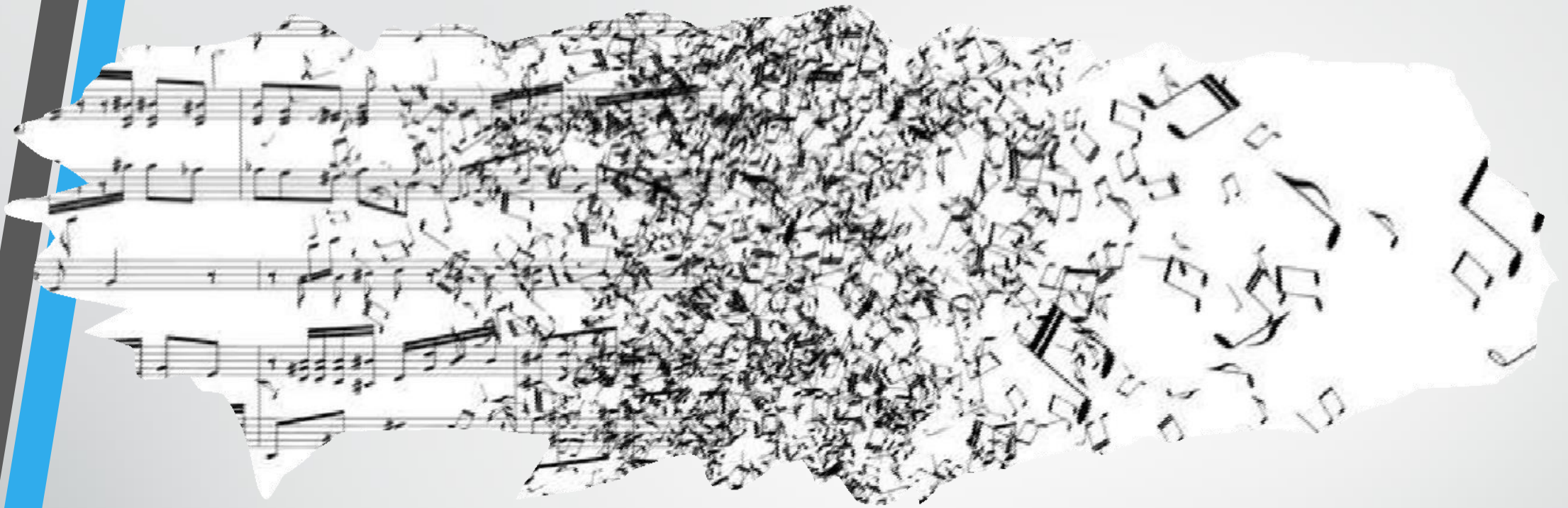
Himpunan partisi music dalam lembar aransemen, digunakan oleh dirigen saat melatih atau memimpin orkestra

SCORE

Istilah penyebutan lain untuk partitur atau aransemen lengkap yang lazimnya digunakan oleh dirijen.

NOT

Lambang yang melukiskan nada secara visual



MACAM NOTASI MUSIK


BERDASARKAN KEBUTUHANNYA NOTASI MUSIK YANG DIKENAL DI INDONESIA ADA DUA

MACAM NOTASI MUSIK

NOTASI YANG LAZIM DIKENAL DI INDONESIA ADALAH NOTASI BALOK DAN ANGKA



Ca-tu-da Pan-ca-si - la a - ku-lah pen-di-king - mi Pa-tri - ot Prok-la-ma -
si Se-di - a her-ker-ban un - tuk - mi Pan-ca - si - la Da-sar Ne - gi - ra Rak-yat
a - dal mak-murser-tau - sa Pri - ha - ahang-sa - ku A-yo ma - ju ma - ju a-yo ma -
ju ma - ju A - yo ma - ju ma - ju



Ⓒ Ⓒ Ⓒ Pak Daljono
3 4 | 5 i 5 3 | 5 . . 2 3 | 4 2 5 3 | 3 . . 1 1 |
Balonku ada lima rupa rupa war na nya Hijau
Ⓕ Ⓒ Ⓒ Ⓒ
| 6 6 7 i | 5 . . 3 4 | 5 4 3 2 | 1 . . 3 4 |
Kuning kelaabu merah muda dan biru Mele-
Ⓒ Ⓒ Ⓒ
| 5 i 5 3 | 5 i . 2 3 | 4 2 5 4 | 3 . . 1 1 |
tus balon hijau der hatiku sangat kacau Balon
Ⓕ Ⓒ Ⓒ Ⓒ

• NOTASI BALOK

Notasi balok (the grand staff) merupakan notasi yang saat ini digunakan oleh seluruh dunia sebagai Bahasa universal musik

• NOTASI ANGKA

Not angka umumnya digunakan oleh guru-guru sekolah untuk mengajarkan lagu-lagu nasional, tradisional secara mudah dan cepat



MENGENAL NOT

NOT BALOK

NOT
MEMAHAMI NILAI
NOT

whole note, 4 beats each:




half notes, 2 beats each:



quarter notes, 1 beat each:



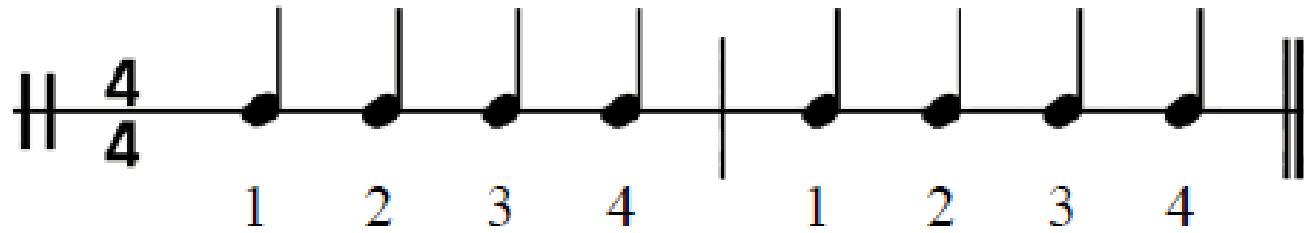
NOT
MEMAHAMI NILAI
NOT

Name	Note	Rest
Whole Note		
Half Note		
Quarter Note		
Eighth Note		
Sixteenth Note		

NILAI NOT

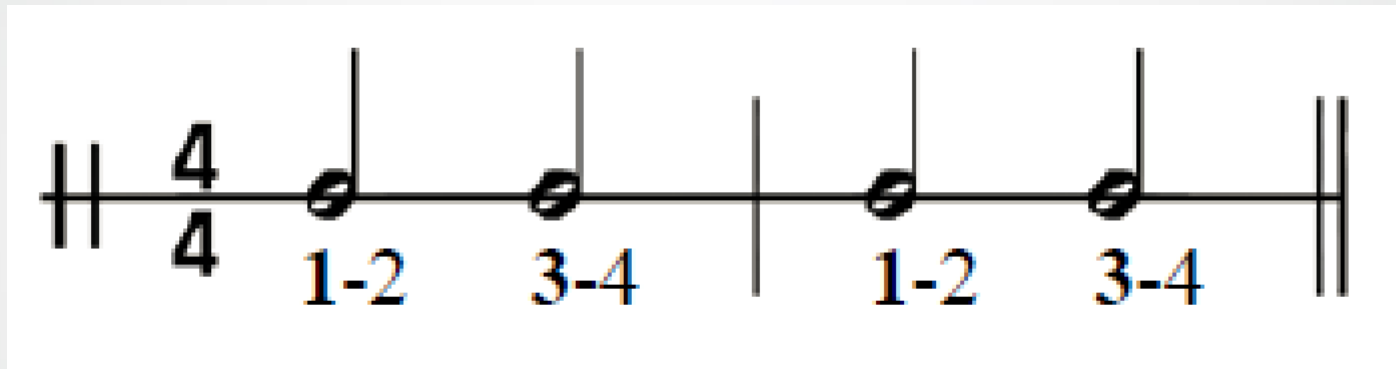
BACA TANPA
MENGGUNAKAN
NADA! (HANYA
RITMIKNYA SAJA)



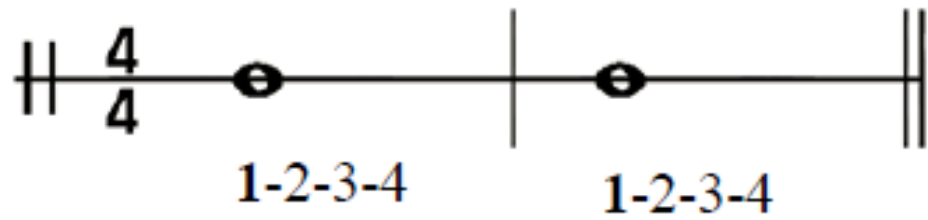


HITUNGAN NOT SEPEREMPAT (QUARTER NOTE)

HITUNGAN NOT SETENGAH (HALF NOTE)



Gunakan pola hitungan menggunakan angka untuk mempermudah anda menentukan tempo



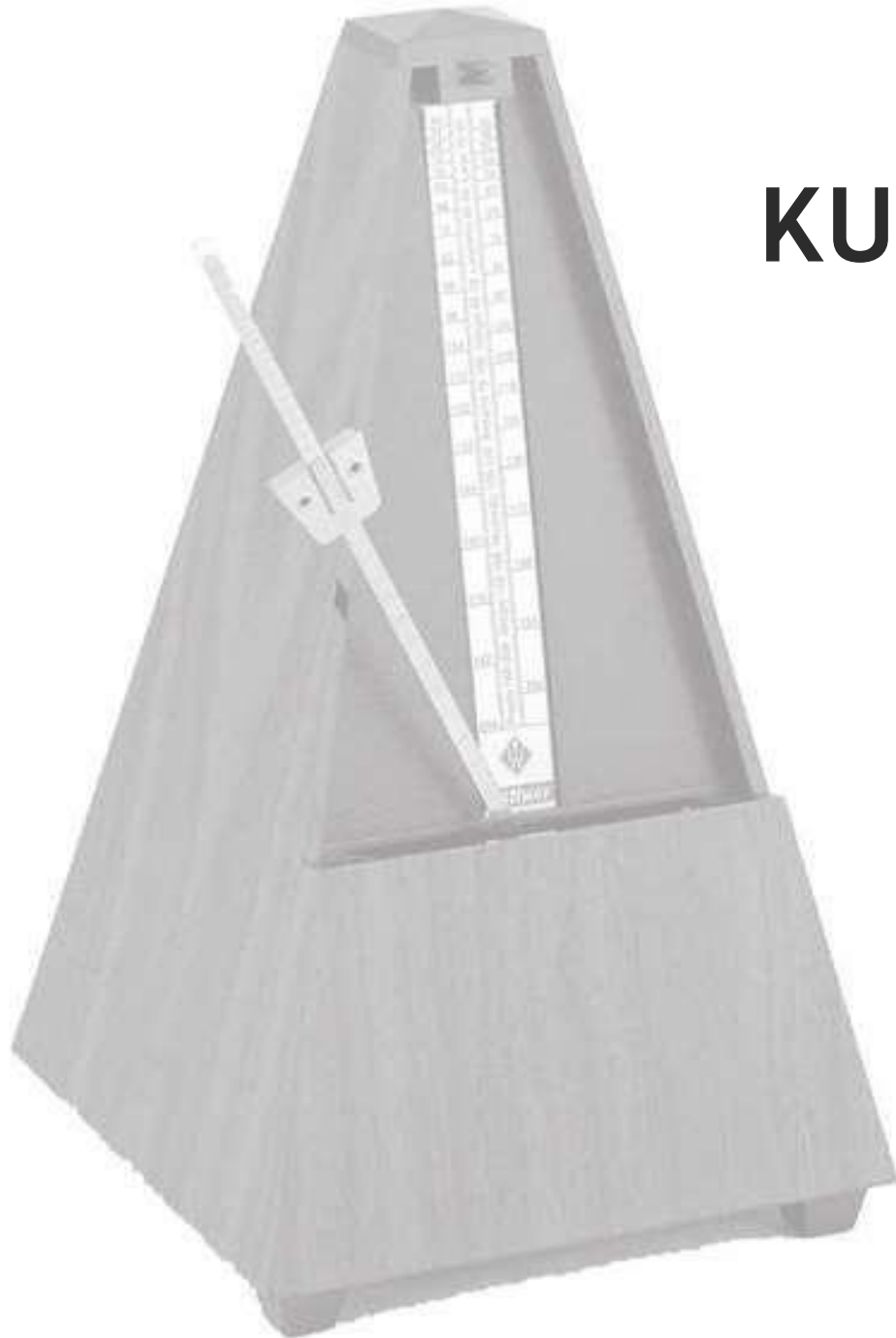
Not penuh dengan pola
hitungan 1- 2 – 3 – 4

KOMBINASIKAN



A musical staff in 4/4 time with a treble clef. The staff is divided into three measures. The first measure contains a single quarter note with a black square above it, labeled with the fingering (1-2-3-4) below. The second measure contains two quarter notes, each with a black square above it, labeled with fingerings (1-2) and (3-4) below. The third measure contains four eighth notes, each with an accent mark above it, labeled with fingerings (1), (2), (3), and (4) below. The time signature '4/4' is written at the beginning of the staff.

NOT ISTIRAHAT (REST NOTE)



KUNCINYA ADALAH HITUNG

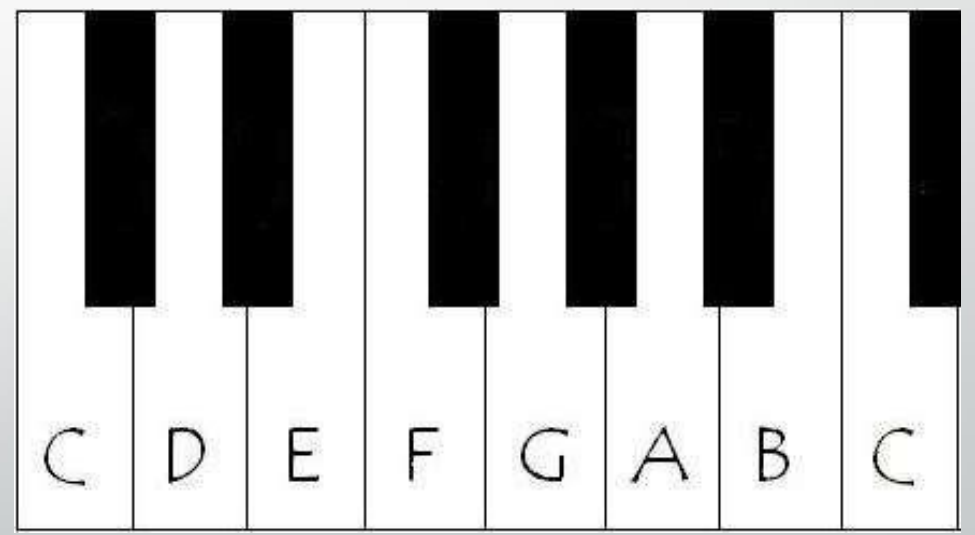
The Grand Staff

The diagram illustrates the components of a Grand Staff, which consists of two staves joined by a brace on the left. The top staff is labeled 'Treble Clef' and the bottom staff is labeled 'Bass Clef'. A bracket on the left side of the staves is labeled 'Staff System'. At the top left, a tempo marking shows a quarter note followed by '= 96'. The time signature, $\frac{3}{4}$, is circled and labeled 'Time Signature'. The key signature, consisting of two flats (Bb and Eb), is labeled 'Key Signature'. The first measure is divided by a 'Bar line'. The second measure contains a note with a flat accidental, labeled 'Accidental (flat)'. The third measure contains a note with a sharp accidental, labeled 'Accidental (sharp)'. The fourth measure contains a note with a natural accidental, labeled 'Accidental (natural)'. A bracket below the first three measures is labeled 'Measure'. The staff ends with a thick vertical line labeled 'Final Bar Line'.

A musical score in 4/4 time, consisting of two staves: a treble clef staff and a bass clef staff. The treble staff contains a melody of quarter notes: C4, D4, E4, F4, G4, A4, B4, C5. The bass staff contains a bass line of quarter notes: C3, D3, E3, F3, G3, A3, B3, C4. Above the treble staff, fingerings are indicated as 1 2 3 1 2 3 2 3 2 1 3 2 1. Below the bass staff, fingerings are indicated as 5 4 3 2 1 3 1 3 1 2 3 4 5.

Not yang terdapat pada piano /pianika

NOT PADA PIANO/PIANIKA



2 beats per measure.

A musical staff in treble clef with a 2/4 time signature. The staff contains four measures of music. The first measure has two quarter notes. The second measure has two quarter notes. The third measure has two quarter notes. The fourth measure has a quarter note followed by a half note. The lyrics 'Twin - kle twin - kle lit - tle star,' are written below the notes.

Quarter note gets one beat.

TIME (WAKTU)

4	3	2
4	4	4

COBALAH MAINKAN NOT-NOT INI!



COBALAH MAINKAN NOT-NOT INI!



COBALAH MAINKAN NOT-NOT INI!

SUARA 1

Musical notation for the first system, consisting of two staves with treble clefs. The first staff contains a sequence of notes: G4, A4, B4, C5, B4, A4, G4, followed by a quarter rest. The second staff contains: G4, F4, E4, D4, C4, B3, A3, followed by a quarter rest. The piece concludes with a double bar line.

SUARA 1

5

Musical notation for the second system, consisting of two staves with treble clefs. The first staff contains a sequence of notes: G4, A4, B4, C5, B4, A4, G4, followed by a quarter rest. The second staff contains: G4, F4, E4, D4, C4, B3, A3, followed by a quarter rest. The piece concludes with a double bar line.